

Furniture / mirror luminaire - Opal diffuser - direct/indirect distribution

Housing made of anodised extruded aluminium profile, screw-type end faces made of plastic coated white aluminium, vertical or horizontal wall installation possible, with integrated cable channel and protection rated cable entry. Housing colour natural anodised aluminum; Light distribution direct/indirect distribution by means of Opal diffuser of Polycarbonate, of ISCC-certified "TRUCIRCLE™" polycarbonate with a smooth surface. Electrical connection via 3-pole connection terminal with plug-in contacts..

CHARACTERISTICS

Order number	16161244125
EAN number	4020863321889
Commodity code	94051190
Certification mark	IP 44, Protection class I, ENEC10 VDE, Heat filament test 850°C, F, MM, Indoor, CE
Impact resistance (IK rating)	IK02 (10°C bis 35°C)
Ambient temperatur	ta 10°C to 35°C
Warranty period	5 years
State funding programs	BEG - Federal funding for efficient buildings (valid only for Germany)

ELECTRICAL ENGINEERING

Controller	Electronic driver (1 pcs.)
System output	18W
Mains voltage	230V/50Hz
Circuit breakers (inrush current)	55 pieces/B10, 90 pieces/B16, 65 pieces/C10, 100 pieces/C16
Energy efficiency class/light source	B

LIGHTING TECHNOLOGY

Placement	LED, Colour rendering/Light colour CRI ≥ 80 / 4000K
Colour tolerance (MacAdam)	3SDCM
Nominal luminous flux	2178lm
LED service life	50000h L80/B10 (Tq 35°C)
Luminaire luminous efficiency	121lm/W

MECHANICS

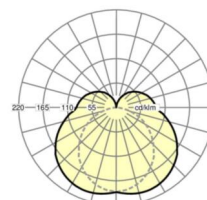
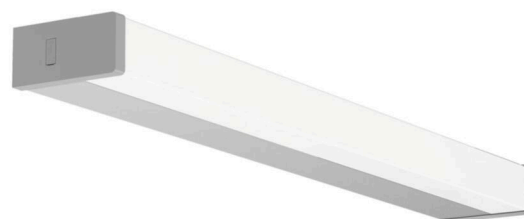
Housing colour	natural anodised aluminum
Dimensions (LxWxH/DxH)	1160mm x 47mm x 82mm
Weight (net)	1.7kg
Cable entry KE (X/Y)	0mm/0mm
Type of installation	Wall mounting, Furniture mounting

Dimensions

L	1160 mm	Length
B	47 mm	Width
H	82 mm	Height
A1	900 mm	Mounting distance single mounting
X	0 mm	Distance cable infeed to the center of the luminaire on the X-axis
Y	0 mm	Distance cable infeed to the center of the luminaire on the Y-axis

DEEP-LINK

<https://www.regiolux.de/en/article/16161244125>



Reference	LED 2000lm 840
ηLB	100 %
Φ ↓/↑	77 % / 23 %

